


The Birmingham Business Alliance
and
The Coalition for Regional Transportation
present

I-422: The Economic Impact


Dr. Samuel Addy
Center for Business and Economic Research
Culverhouse College of Commerce and Business Administration
The University of Alabama

The Harbert Center, Birmingham, Alabama June 28, 2010

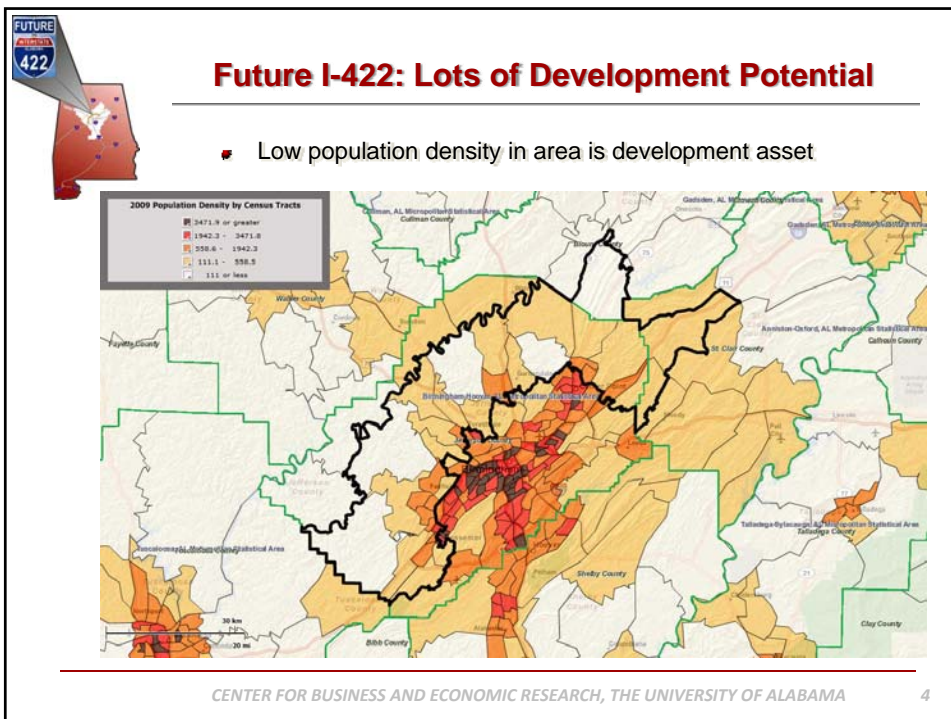
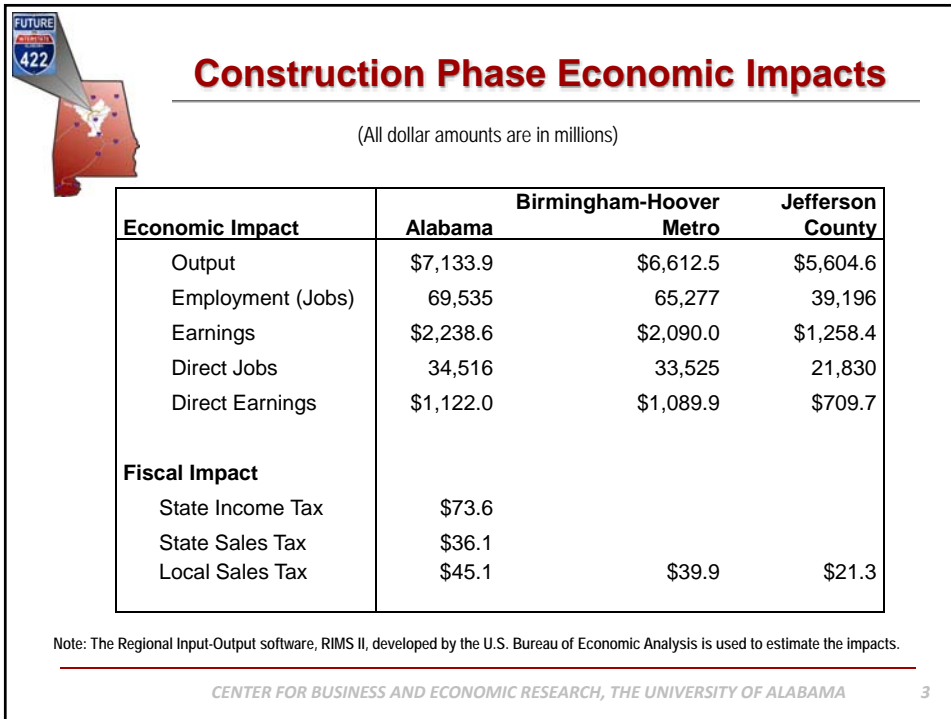



The Birmingham Northern Beltline: Future I-422

- 52.5 miles at \$3.044 billion
- \$1.122 billion for 34,516 Alabama jobs during 21-year construction
- Purpose:
 - ◆ Provide additional highway for growth
 - ◆ Improve travel safety and travel times
 - ◆ Improve in-area and through traffic flows
- Will also improve air quality and provide lots of economic benefits



CENTER FOR BUSINESS AND ECONOMIC RESEARCH, THE UNIVERSITY OF ALABAMA 2





Post-Build Annual Economic Impacts


(All dollar amounts are in millions)

Economic Impact	Alabama	B-H Metro	Jefferson County
Output	\$2,117.7	\$1,962.9	\$1,663.7
Employment (Jobs)	20,641	19,377	11,635
Earnings	\$664.5	\$620.4	\$373.6
Direct Jobs	10,246	9,952	6,480
Direct Earnings	\$333.1	\$323.5	\$210.7
Fiscal Impact			
State Income Tax	\$21.8		
State Sales Tax	\$10.7		
Local Sales Tax	\$13.4	\$11.8	\$6.3
State Property Tax	\$1.1	\$1.0	\$0.6
Local Property Tax	\$6.8	\$6.4	\$5.0

Note: The Regional Input-Output software, RIMS II, developed by the U.S. Bureau of Economic Analysis is used to estimate the impacts.

CENTER FOR BUSINESS AND ECONOMIC RESEARCH, THE UNIVERSITY OF ALABAMA

5



In Conclusion, the Future I-422

- Will pay back in-state match 9 years after completion
- Will improve travel safety, travel times, traffic flow, air quality and provide new economic development opportunities
- Can lower area poverty rate by providing higher paying jobs to, while not adversely affecting, minority and lower income groups
- Will have more economic impacts than the estimates presented
- Making the most of the benefits that the highway presents will require good leadership and planning (including especially, mixed-use and mixed-density development)

Thank you

CENTER FOR BUSINESS AND ECONOMIC RESEARCH, THE UNIVERSITY OF ALABAMA

6